

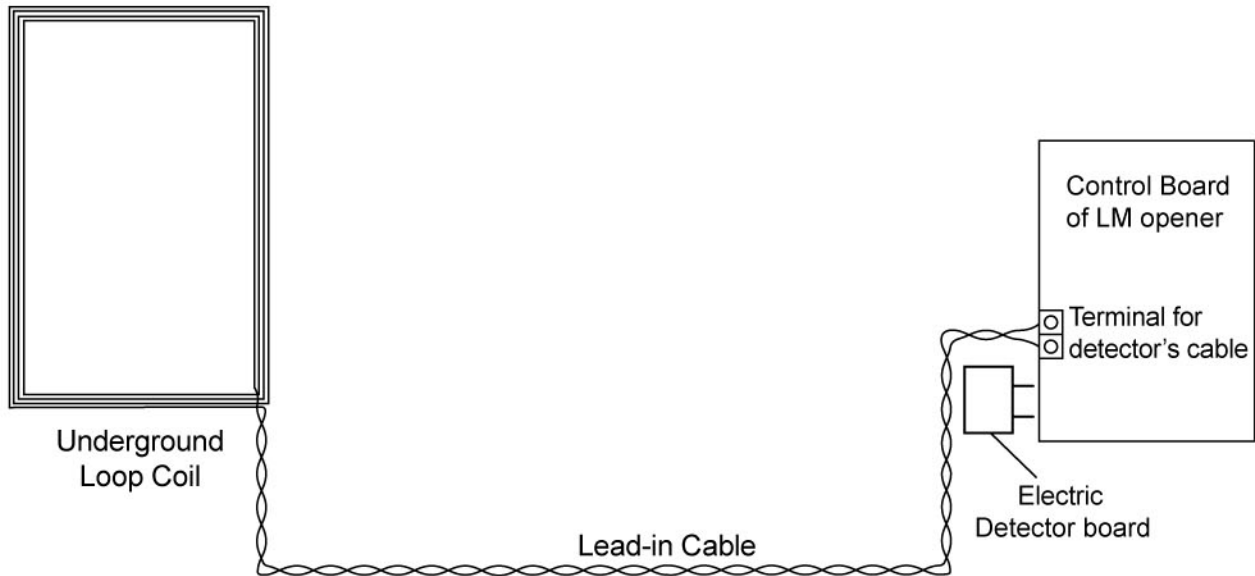


Swing Gate Opener User's Manual

www.WholesaleGateOpener.com

Manual instruction for loop detector (LM155)

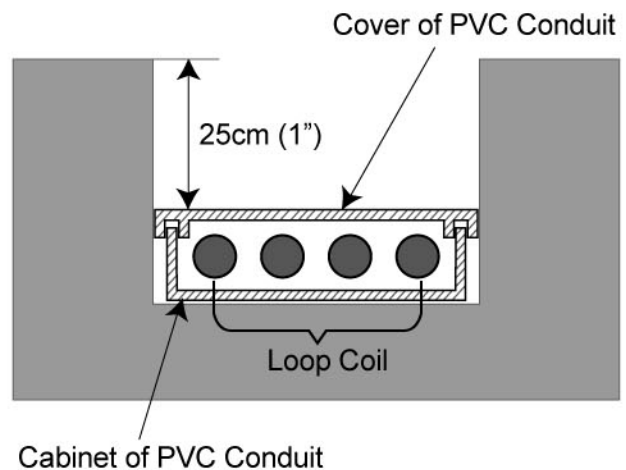
The LM155 Loop Detector is designed to be used with "LockMaster™ Swing Gate Opener only. It allows your vehicle to exit the property without hand operation. The gate opens automatically when loop detector senses the vehicle moving past.



I. Determine the Size and Placement of Slot and Loop Coil

1. Cutting Slot

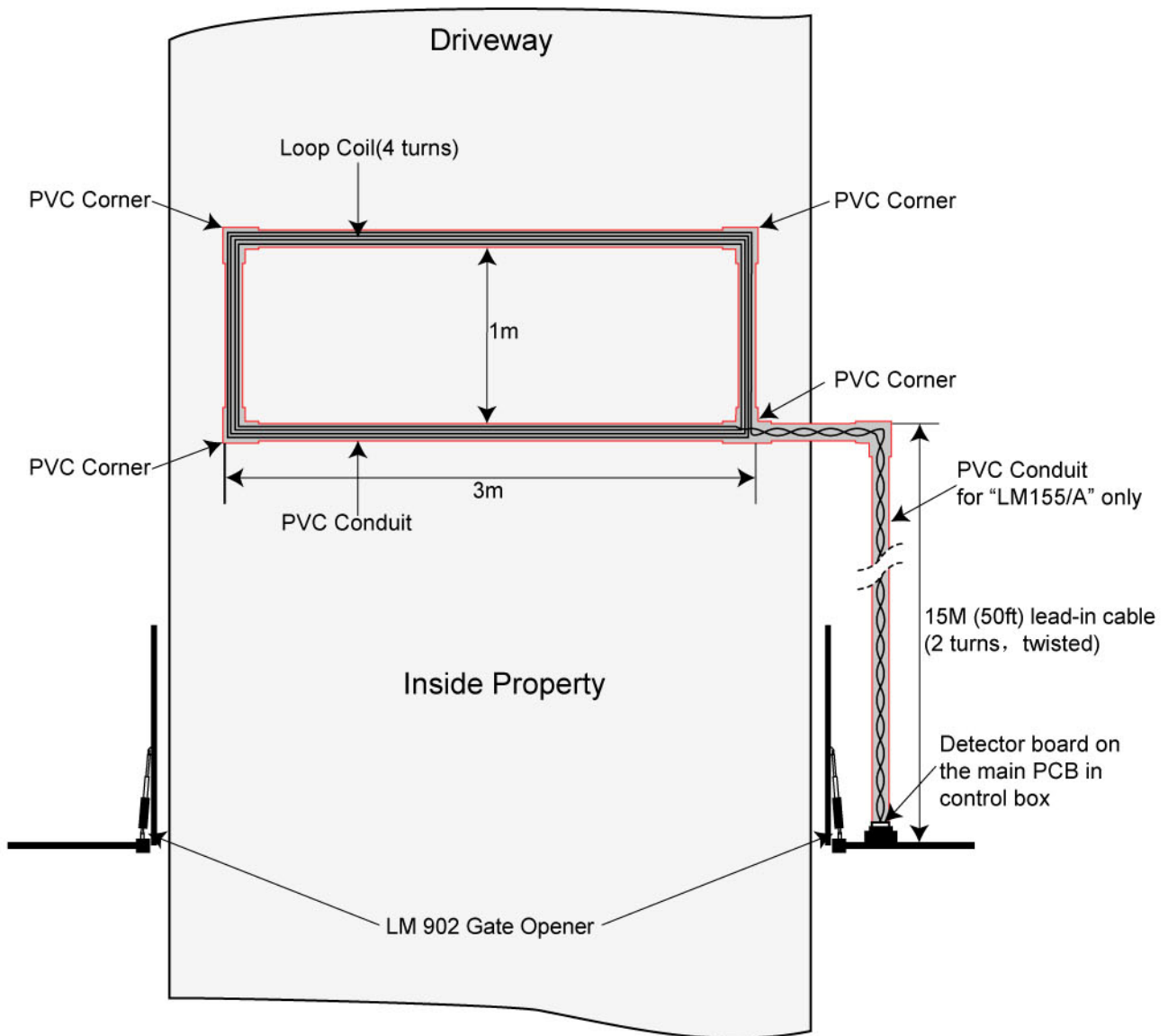
Use a concrete saw to cut a slot of 5cm in width and 25cm in depth in rectangular pattern. Place the PVC conduit along the rectangular slot. The PVC conduit consists of cabinet, cover and corner. See the below picture. The PVC conduit helps the loop coil not move, and protects the coil from overheating and supercooling.



2. Placing Cable

Place the cable in the PVC cabinet. It is suggested to place 4 turns of the cable. The loop coil must be held tightly twisted in the PVC conduit by double-side adhesive tape. Restore the cover after finishing placing the loop coil.

The 15-meter (50ft) lead-in cable should be also placed 25cm below the surface of the pavement.

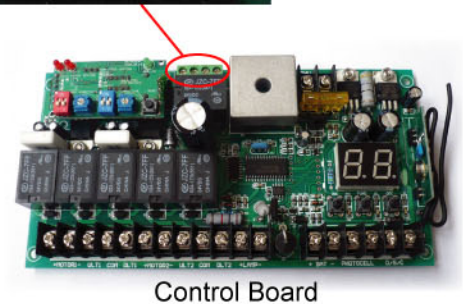
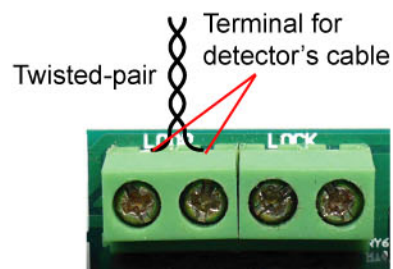


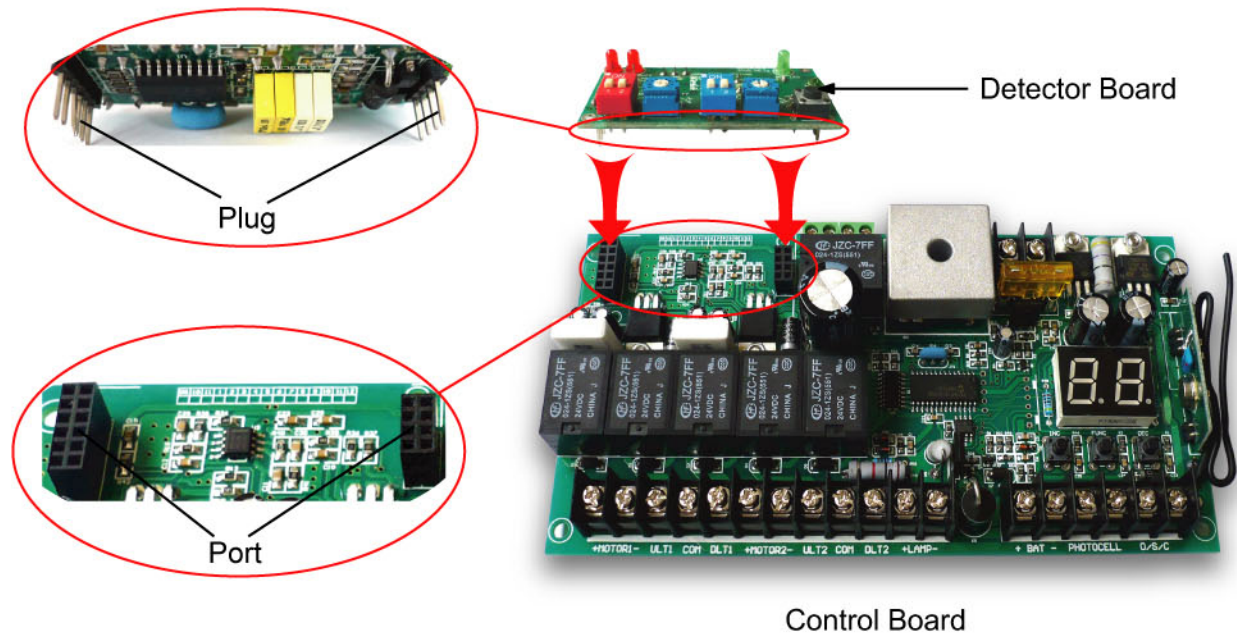
The lead-in cable can also be placed in the PVC conduit (for item no.LM155/A). If so, the PVC conduit must be laid the underground first. The PVC conduit may protect the lead-in cable from lawn mowers and string trimmers.

II. Installing the Electric Detector Board

3. Connecting to control box

The two stripped end wire of lead-in cable (twisted-pair) is connected to terminal for cable on main control board in control box. Plug the electric detector board into "port" for loop detector on the main control box.



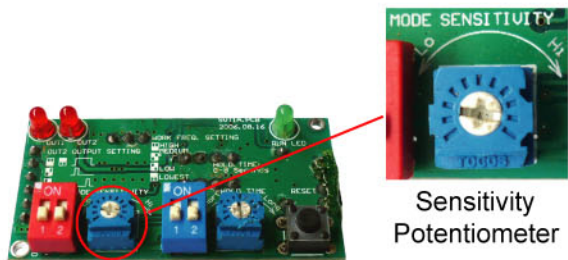


III. Testing

4. To test the sense function

Drive the vehicle to approach loop coil and see if the gate opens once the LM opener is power ON. If the gate doesn't open, adjust the sensitivity potentiometer (SP) and test again until the gate opens.

5. Adjusting Sensitivity



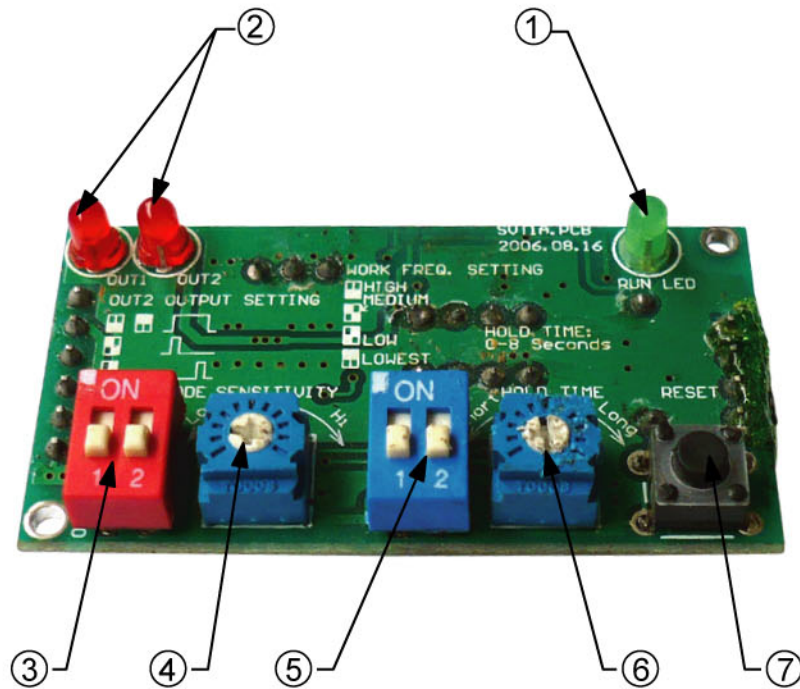
- Turn the SP clockwise to increase the sensitivity.
- Turn the SP counter-clockwise to decrease the sensitivity.

NOTE: The sensitivity of the loop detector should be adjusted at a proper range to detect the moving vehicle. For safety, the sensitivity should be adjusted to avoid unwanted moving metal objects from activating the gate opener, such as moving children's toy cars, bicycles and tricycles.

IV. Sealing

6. Once finish testing, restore the PVC conduit cover, fill in the slot with soil or sand, and level the pavement.

V. General Information on the Loop Coil connection and Function of the Detector Electric Board



Detector Board

①	<p>Operation Indicator The LED light slowly flashes when the detector electric board is in normal operation.</p>	④	<p>Sensitivity Adjusting Turn it clockwise to increase the sensitivity, and counterclockwise to reduce the sensitivity.</p>
②	<p>Loop Indicator The LED light slowly flashes before it is OFF if the loop coil is detected once the control box is power ON. If the LED light firstly flashes slowly and then flashes quickly before it is OFF, abnormality happens in the loop coil. Check the loop coil. If a vehicle is detected, the LED light will be ON for a few seconds depending on Sensitivity Boost Time-delay Setting.</p>	⑤	<p>Output Frequency Setting The mode has been set in the factory.</p>
		⑥	<p>Sensitivity Boost Time-delay Setting The time-delay is adjustable from 0~8 seconds. Turn it clockwise to increase the time-delay.</p>
③	<p>Output Mode Setting The mode has been set in the factory.</p>	⑦	<p>Reset Key Press the rest key in case of abnormality to reset the detector PCB.</p>



LockMaster™
16915 SE 272nd Street, Suite 100-105
Covington WA 98042 USA
sales@WholesaleGateOpener.com
www.WholesaleGateOpener.com
©2005-2009 LockMaster All Rights Reserved